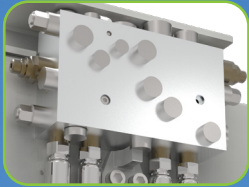
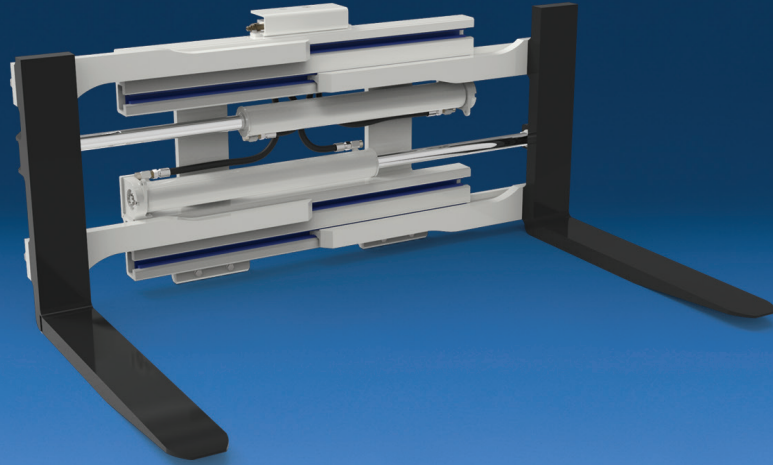


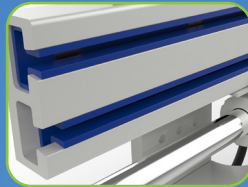
# High Performance Clamping and Fork Positioning – The Handling Versatility You Need



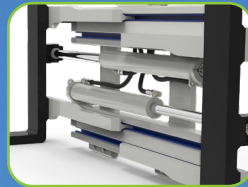
New high-flow regenerative valve with pressure relief in clamp, sideshift and backhand functions



Bolt-on fork arms for ease of installation and removal



No maintenance bearings with 10,000 hour warranty



Visibility through frame



Many additional fork configurations and accessories

## APPLICATIONS

The Cascade J-Series Fork Clamp is ideal for handling a wide variety of loads. Awkward loads such as crates, bales, and tyres can be clamped between the forks. The fork clamp also functions as a fork positioner, allowing the truck operator to quickly reposition the forks to fit varying pallet or container configurations. Forks can be opened wider than the frame width—something a normal fork positioner cannot do—which makes handling wide loads easier. Ideal for food processing, automotive, manufacturing, recycling, foundries and general manufacturing operations.

## J-SERIES FEATURES

**Industry-leading visibility.**

**Efficient hydraulic system which minimises energy consumption and maximises performance.**

- Clamp and backhand protection.
- Flow divider for equal arm movement.
- Top-mounted hydraulic cartridges and test port for ease of access and adjustment.
- Sideshift circuit relief optimises sideshift speed and performance.

**Rugged design for optimal strength, durability and performance.**

- Center mounted hardened replaceable frame wear segment. (Except for revolving models).
- High strength steel frame.
- Lubrication-free, full length UHMW bearings.
- Maximum clamp force for secure handling.
- Valve guard protects hydraulics located behind frame from impact and debris.

**Designed for convenience and performance.**

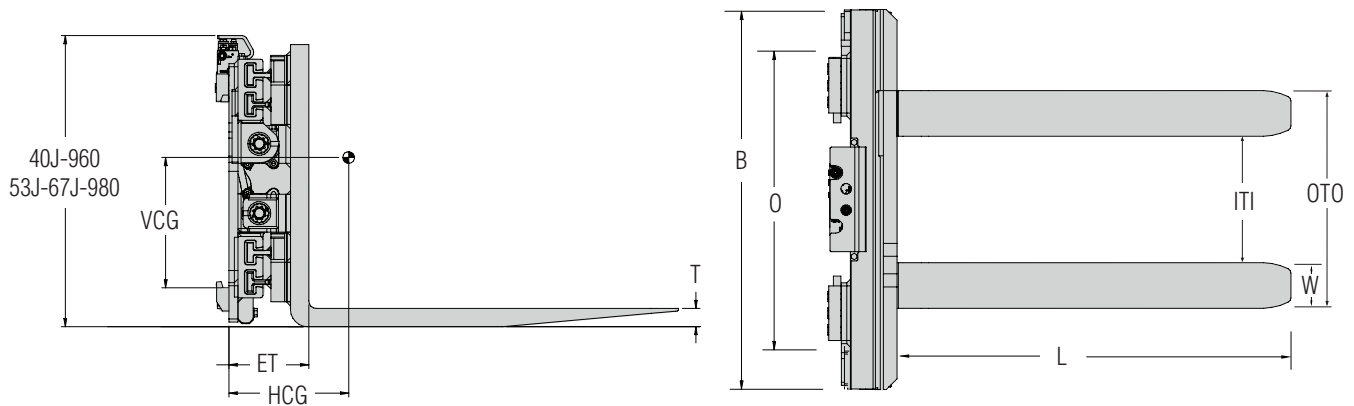
- Integrated true centering key for precise and secure installation
- Available in two pressure offerings to match attachment to truck hydraulic system.

## UNIQUE ARM FEATURE

- Bolt-on pallet fork arms.

## OPTIONS

- Custom Forks available.
- Drop Shank Forks.
- Independent arm control.
- External sideshifting mounting available.
- Full-width lower frame wear strips.
- Bumper/Cylinder cover.
- Factory installed load backrest.
- Quick Disconnect Mounting Kit.



Catalogue Order No.	Capacity@ Load Centre on Forks	Capacity@ Load Centre as Clamp	Overall Width	Opening Range	Opening Range Over the Forks	Fork Size	Min Truck Carriage	Effective Thickness	Horizontal Centre of Gravity	Vertical Centre of Gravity	Weight	Mounting Class
	kg@mm	kg@mm	B	ITI	OTI	LxWxT	O	ET	HCG	VCG	kg	ISO 2328
<b>Low Pressure - For trucks delivering less than 190 bar of operating pressure</b>												
<b>40J-CFS-4A-0120</b>	5000@600	4000@600	1250	420-1800	720-2100	1200x150x60	930	263	205	278	902	4A ②
<b>40J-CFS-4A-0150</b>	5000@600	4000@600	1450	420-1800	720-2100	1200x150x60	930	263	199	282	950	4A ②
<b>53J-CFS-4A-0100</b>	6000@600	5000@600	1450	405-2035	765-2395	1200x180x60	1080	280	209	286	1101	4A ②
<b>53J-CFS-4A-0140</b>	6000@600	5000@600	1550	355-2035	715-2395	1200x180x60	1080	280	207	287	1123	4A ②
<b>53J-CFS-4A-0180</b>	6000@600	5000@600	1600	648-2583	1008-2943	1200x180x60	1080	280	202	291	1186	4A ②
<b>67J-CFS-4A-0100</b>	7000@600	6350@600	1450	405-1990	765-2350	1200x180x65	1080	290	216	285	1175	4A ②
<b>67J-CFS-4A-0130</b>	7000@600	6350@600	1550	365-1970	725-2330	1200x180x65	1080	290	214	286	1197	4A ②
<b>67J-CFS-4A-0190</b>	7000@600	6350@600	2500	650-3400	1010-3760	1200x180x65	1680	290	189	302	1551	4A ②

② Class 5, integral terminal west or Pin-Type mounting available.  
For other mounting options, **consult Cascade**.

► Class B mounting in forks available.

► **Consult Cascade** for high pressure attachments for use with lift trucks with auxiliary pressures between 190 and 250 bar max.

► Fork offset may be reversed for a narrower opening range (53J/67J).