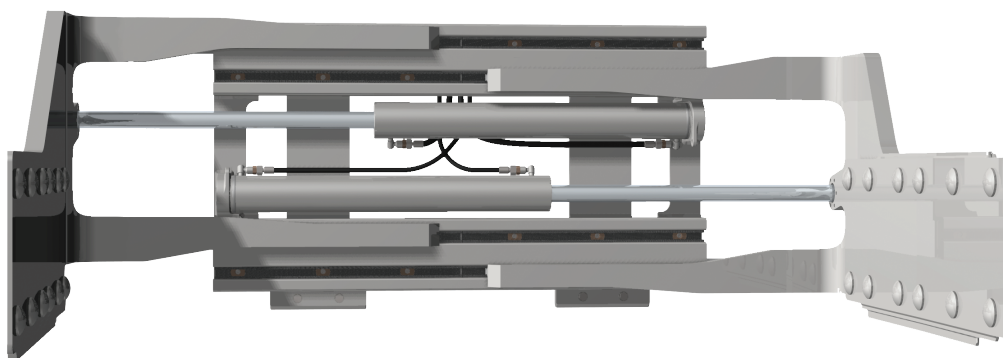


High Capacity J-Series Bale Clamps



Rugged Clamps For Demanding Applications

J-Series Bale Clamps can be used in a variety of applications and across many industries. Here's just a few.



Recycling Industry



Paper Industry



Waste Management Industry



Ports and Logistic



Pulp Industry

Cascade's rugged and dependable G-Series Bale Clamps are expertly designed to excel in harsh recycling and pulp bale applications.

With capacities up to 10000 kgs, and clear visibility through, above and around the frame, even your toughest jobs can be handled with ease.

Hydraulic Compatibility

Fits both high and low pressure lift truck systems. Hydraulic circuit provides:

- Overclamping protection
- Sideshift & backhand pressure relief
- Excellent accessibility for servicing
- Flow division

Visibility

Designed with the operator in mind. Maximum visibility through and around the frame. Profiled arms allow good functionality and visibility without sacrificing strength.

Durability

Cascade clamps feature all steel frame sections, extruded alloy steel arm bars, cast arm bases, full length, one-piece thick-wall UHMW replaceable arm bearings, protected hydraulic valves and bolt-on lower frame wear strips.

Gentle Handling

Full pressure-protected hydraulic valve and application designed arms for a clamp that will handle your product gently but securely.

Easy to Service

True centering key for easy installation on lift truck. Modular design coupled with accessibly components and high quality materials make service easy. Full supporting service parts and documentation are available.

Fast, Uniform Motion

Features low friction bearings, extruded frame and arm profiles and double acting piston seals. Built-in hydraulic flow dividers and bi-directional relief valve guarantee fast and uniform arm movement.

Handles nearly any type of baled product.

SUPERIOR

Arm corner casting provides superior strength over the life of the clamp.



RUGGED

Cylinder bumper protects hydraulic lines and cylinders from impact and debris. Standard on Recycling Clamps, optional on Pulp Bale Clamps.



SMART

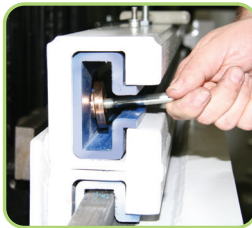
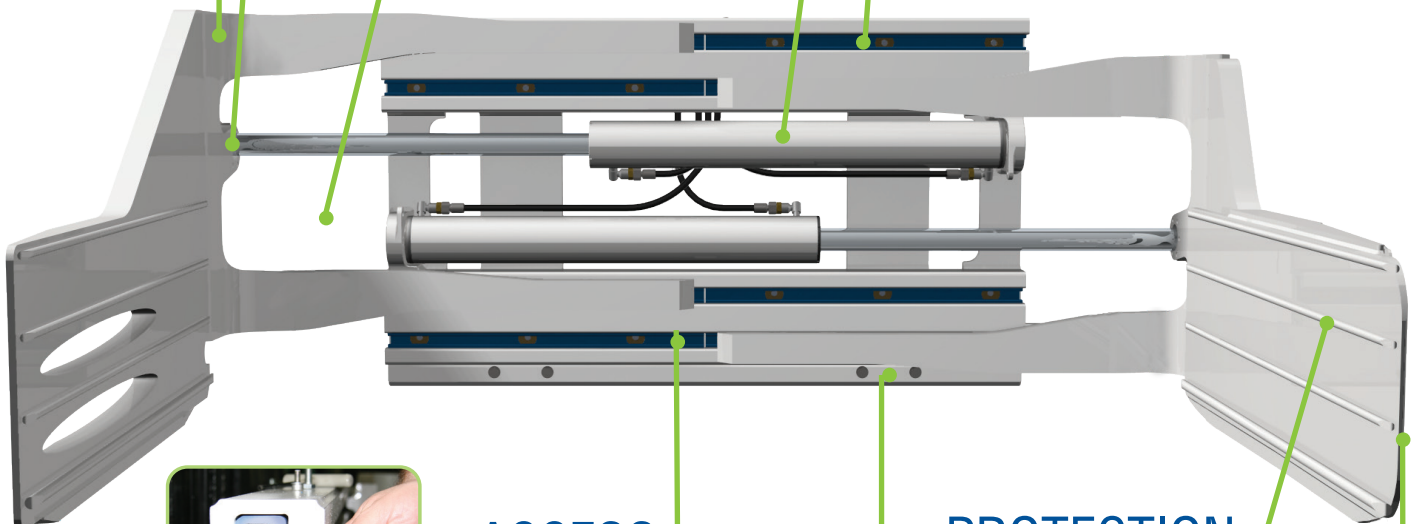
Self aligning spherical nut aligns cylindrical rod to arm providing equal arm pressure throughout the full clamping range.

VISIBILITY

Excellent driver visibility through, around and above the frame.

DURABLE

Full width lip over UHMW bearings provide maximum strength and bearing support, greatly reducing wear on bearing surface, lowering replacement cost of bearings.



ACCESS

Easy bearing replacement with Bearing Retention method.

PROTECTION

Round smooth bar arm facing is standard and reduces potential for damage to pulp bales. Re-bar arm facing is optional for pulp handling and standard on recycled clamps.



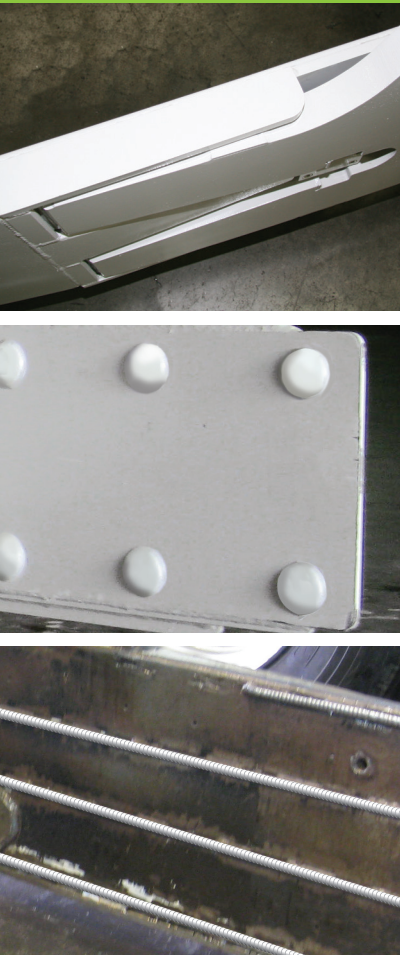
STRENGTH

Hardened wear strip protects frame from wear when scraping on the ground. 2-piece for the Pulp Clamp and 1-piece full width for the Recycling Clamp.

ASSURANCE

Thin arm profile enables damage-free "knifing" between tightly stacked bales.

Efficient & Economical



High Capacity J-Series Bale Clamps

MODELS:

Articulated Left Arm: Articulating left arm self-aligns arms to the load to evenly distribute clamp force on entire load. Perfect for loads that are two bales deep.

Fixed Arms: Thin profile on both arms for recycling or pulp handling.

OPTIONS:

Optional arm facing available for special applications:

- Button head facing minimizes the potential for damaging the wire wrapped around a unitized load.
- Higher friction re-bar arm facing.

A variety of arm sizes, configurations and opening ranges available.

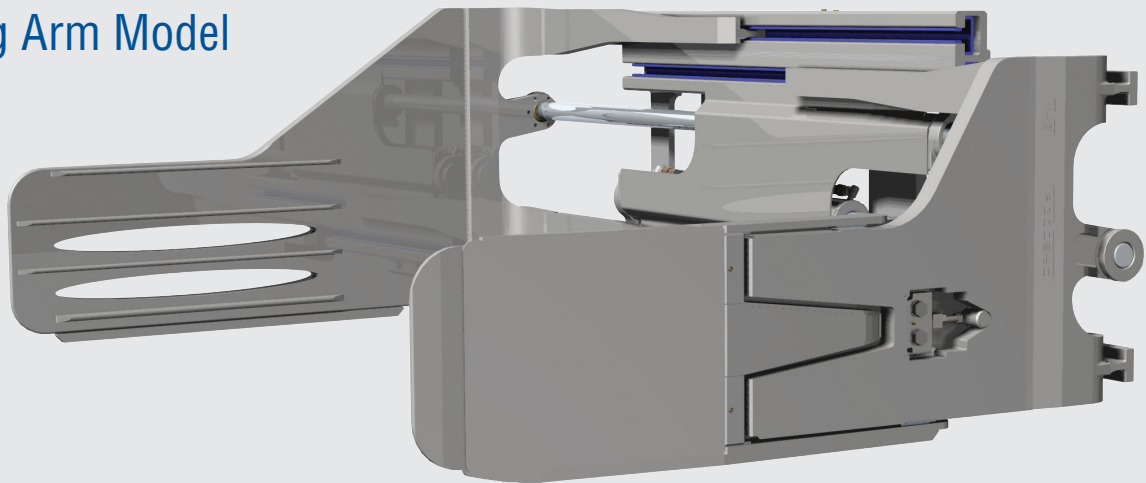
Frame easily adapts to different mountings.

Frame bumper to protect cylinders.

Left hand or right hand hydraulic clamp connection(right hand is standard).

Whatever the application, we can handle it.

Articulating Arm Model



- Adjustability for wear
- Pin less knuckle joint for durability
- Replaceable bronze bearing protects knuckle joint
- Spring to properly align arm
- Zerk fittings for easy lubrication
- Articulating arm distributes clamp force equally from front to back

Cascade (UK) Ltd • 3 Kelbrook Road • Parkhouse Industrial Estate • Openshaw • Manchester M11 2DD • England • Tel. +44 (0) 161 438 4010
 Cascade Benelux/Parts Depot • Damsluisweg 56 • PO Box 3009 • 1300 EL Almere, The Netherlands • Tel +31 036 54 92 950
 Cascade European Headquarters • Cascade Italia S.r.l. • Via Dell'Artigianato 1 • 37030 Vago di Lavagno (VR) • Italy • Tel. +39-045-8989111

cascade
EUROPE

www.cascorp.com