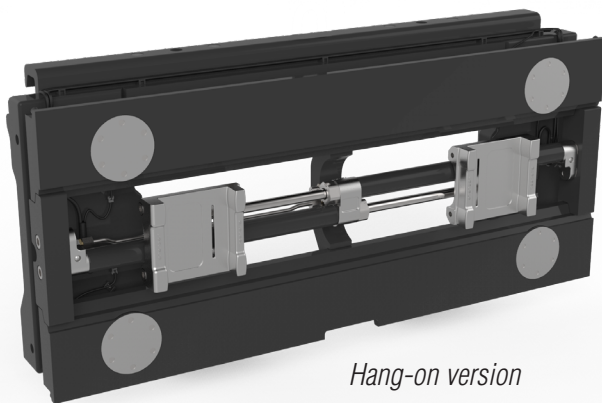


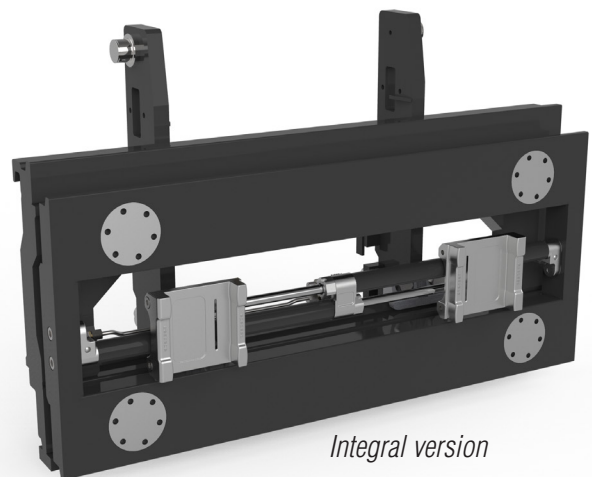
# CASCADE ACTIVWEIGH™ HANG-ON AND INTEGRAL CARRIAGE SCALE



The complete weighing solution that maximises capacity, saves time and improves maneuverability



*Hang-on version*



*Integral version*

**ActivWeigh carriage models include Weigh-in-Motion capabilities.**

For even greater efficiency, combine the carriage with Sideshifting and/or Fork Positioning options.

# THE FIRST OF ITS KIND: **One innovative attachment with the power of three.**

*A combined Weighing Carriage, Sideshifter and Fork Positioner provide multiple operational benefits into one sleek patented design.*

*Don't need all three? The ActivWeigh carriage model is available singularly with sideshifting or fork positioning as additional options.*

## RELIABLE

Proven Cascade K-Series Fork Positioner with common components provides greater reliability and longevity.

## VISIBILITY

Excellent visibility window helps improve operator efficiency and reduce product damage.

**Including:**

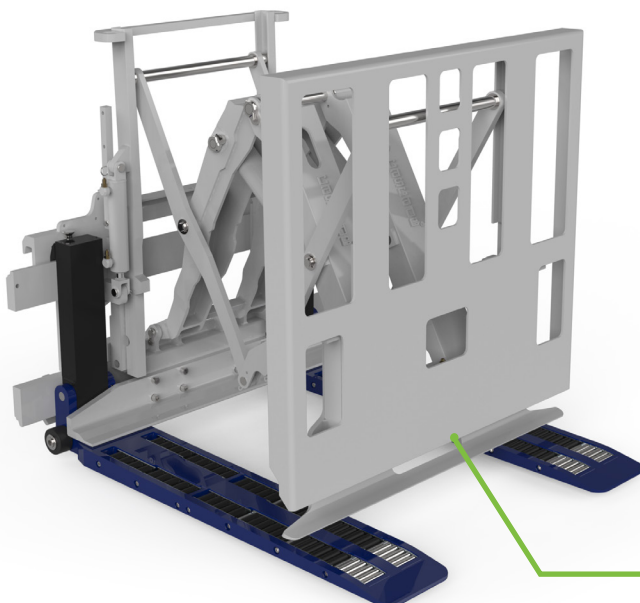
## WEIGH-IN-MOTION\*

Operator can engage a load and start transporting immediately, without delay. Weight data is automatically recorded during transport. **Weight does NOT need to be centered to attain an accurate reading.**



## ALL-IN-ONE DESIGN

This patented design provides greater versatility. Weighing, Sideshifting & Fork Positioning combined within a single unit. Allows for easy installation and connection.



**Display Indicator** With bright backlit display and independent communication as standard, however, optional data communication to truck Telematics is possible.

Cascade ActivWeigh carriage and sideshifting units accept most Cascade attachments on the front like a Push-Pull with Rollerforks or a Single Double. Simply use those units combined with Cascade ActivWeigh™ and you can weigh while loading. No need for a floor scale.

*\*Consult Cascade about Weigh-In-Motion units*

## Hang-On (Stack-Up) Scale Solutions

## Cascade ActivWeigh Integral & Hang-on



Multiple vendors:  
Sideshifter and Fork positioner  
provided by one supplier and the  
scale by another.



Cascade provides sideshifting,  
fork positioning and weighing in  
one sleek, patented package. No  
need to use several suppliers.

'Stack-up' type designs can hinder  
visibility as components may  
not align with regard to visibility  
windows.



Cascade's compact design ensures  
best possible visibility  
for the operator.

After sales support may involve  
more than one vendor.



Cascade supports the complete  
solution as a single-supplier.

Some scale companies provide both  
integral and hang-on type scales.  
Either way, coupling with Sideshifting  
Fork Positioners can pose challenges  
which can create time consuming  
planning and installation processes.



Cascade provides a complete  
package as a single unit with  
specific hydraulic installation kits,  
resulting in less installation time.

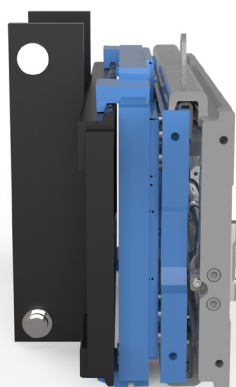
Mast Carriage, Hang-On Scale and  
Hang-On Sideshifting Fork Positioner  
can add up to Effective Thickness of  
217mm (8.5").  
**NOTE: 76mm (3") of additional ET can  
down rate truck load capacity by 225 kg  
(500 lbs) or more.**



**Minimal effect on truck capacity.**  
Cascade integral weighing solution  
combined with a Sideshifting Fork  
Positioner is bundled in a compact  
design with just 144mm (5.7").

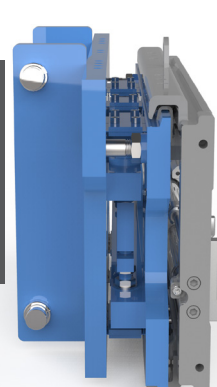
*...Cascade has the solution in one sleek, clean design.*

*Mast Carriage,  
Hang On Scale  
& Hang-On  
Sideshifting  
Fork  
Positioner*



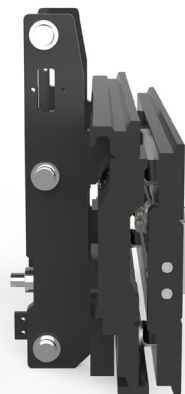
Lost Load  
217mm (8.5")

*Weighing  
Carriage w/  
Hang-On  
Sideshifting  
Fork  
Positioner*



Lost Load  
182mm (7.2")

*A fully  
Integrated  
Weighing  
Sideshifting-  
Fork  
Positioner*



Lost Load  
144mm (5.7")

*Cascade's  
Solution*

**Minimal Effective Thickness (ET) is on average 76mm (3") less than competitive weighing carriage models** which help maximize net capacity of the lift truck while reducing aisle width requirements and improving maneuverability for the end user.



## *Mobile weighing increases productivity and efficiency.*



### **Checking Incoming Goods**

Check incoming goods while they are being offloaded from the freight truck. If an incomplete delivery is identified, you can react on the spot to prevent stock differences and interrupted production processes.



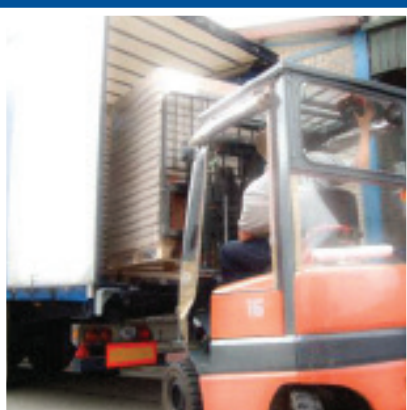
### **Preventing Picking Errors**

Weighing on order picking trucks helps prevent picking errors: if you know your article weight, you can use that weight to determine whether the right amount of a particular article has been picked. (Note: Piece counting feature is not legal for trade.)



### **Filling, Mixing and Dosing**

Accurate filling of drums, containers and big bags means there is no unnecessary loss of material. By weighing the containers during transport on a forklift, you achieve higher efficiency and flexibility in your filling processes.



### **Preventing Overloads**

Avoid the expenses and dangers of overloading freight trucks or warehouse racks. Mobile scales weigh every pallet as they are loaded to ensure the recommended weight is never exceeded.



### **Waste Control/Recycling**

Monitoring waste flows and knowing how much waste is produced at each point in the production line, is the first step towards controlling and minimizing waste.



### **Shipping**

Every company that ships goods needs to know the weight of these goods as accurately as possible. The sender is required by law to declare the correct weight on the shipping documents. Determining shipping weights is probably the most common use of a mobile scale.