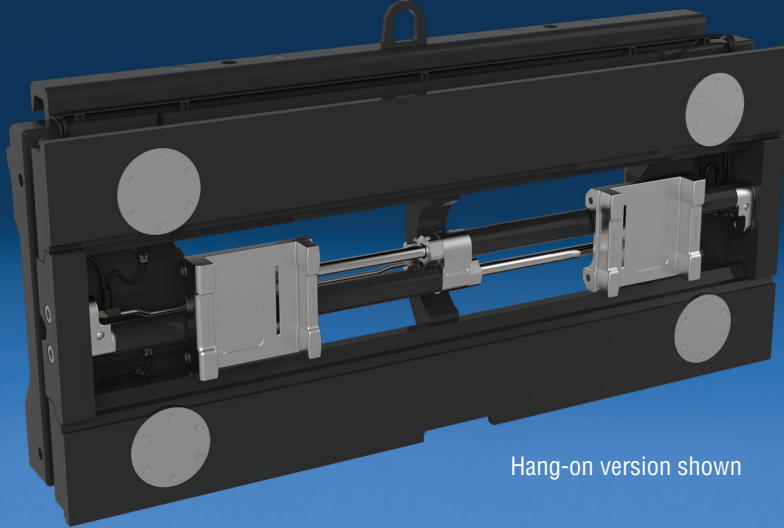


The complete weighing solution that maximises capacity,
saves time and improves maneuverability



Hang-on version shown



Excellent visibility window helps improve operator efficiency



Weighing, Sideshifting & Fork Positioning combined within a single unit. Allows for easy installation and connection



Cascade ActivWeigh carriage and sideshifting units accept most Cascade attachments on the front



Start transporting immediately and weight data is automatically recording



Display Indicator with bright backlit display and independent communication

APPLICATIONS

The first of its kind – Cascade ActivWeigh™. One innovative attachment with the power of three. A combined Weighing Carriage, Sideshifter and Fork Positioner provide multiple operational benefits into one sleek patented design. Don't need all three? The ActivWeigh carriage model is available singularly with Sideshifting or Fork Positioning as additional options. **Weigh-in-motion** increases productivity and efficiency. Common uses include incoming goods control, overload prevention, dosing, filling, waste management, order picking and inventory control.

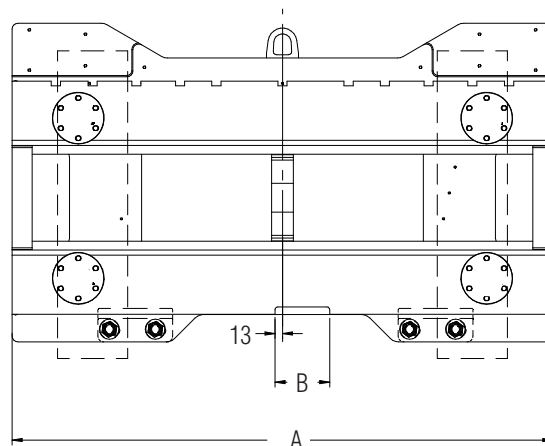
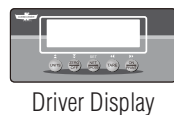
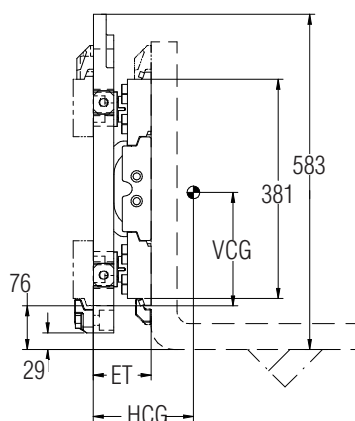
OPTIONS

- Truck powered display available
- Thermal and dot matrix printers.
- Data transfer output devices, including:
 - RS232.
 - Wireless Bluetooth®
 - WLAN (Wi-Fi)
- Hang-on or Integral versions available.
- Forks not included with unit. Consult Cascade for fork lengths.



FEATURES

- Quick installation and set up.
- Digital calibration for fast and easy adjustments.
- Two rechargeable batteries.
- Bright backlit LCD driver display with rechargeable batteries.
- Manual and automatic zero correction.
- Gross/Net weighing.
- Automatic push button tare.
- Automatic low voltage shut off.
- Manual tare entry totaling with sequence number.
- Displays both kg and lb units.
- 5-digit ID code entry.
- Piece counting by sampling or manual piece weight entry.
- Error indicator.
- Internal clock.
- All-In-One patented, clean and sleek design.
- Proven K-Series Fork Positioner with common components provides greater reliability.

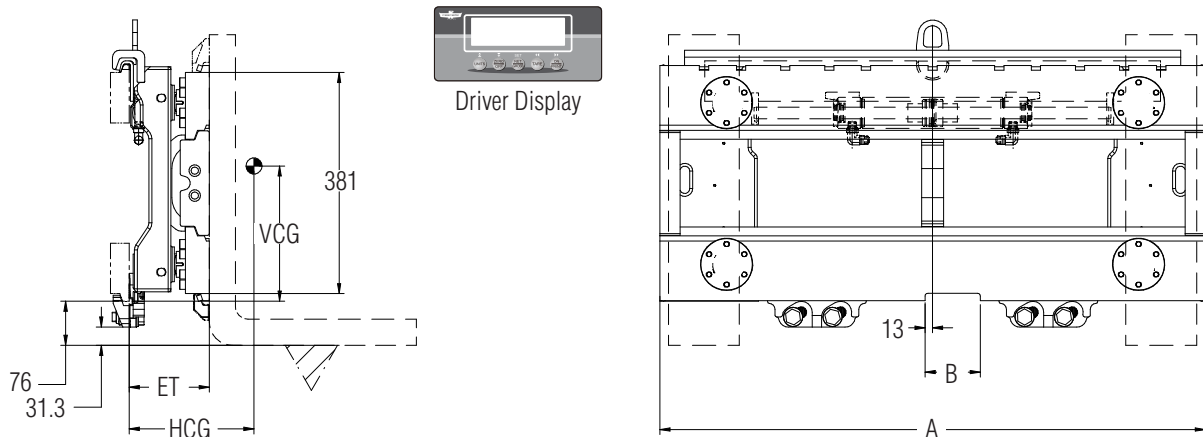


Hang-On

Catalogue Order No.	Capacity@Load Centre	Frame Width	Mounting Class	Minimum Truck Carriage Width	Total Sideshift Available	Weight	Horizontal Centre of Gravity	Vertical Centre of Gravity	Effective Thickness	Fork Loading Slot	Fork Pocket Width	Opening Range In To Out	
		A	ISO 2328				HCG	VCG	ET	G	B	C	D
	kg@mm	mm	mm	mm		kg	mm	mm	mm	mm			
Non-OIML Approved: 0-1,000 kg with 1 kg display graduation; 1,001-2,500 kg with 2 kg display graduation													
25A-WCH-2A-0001	2500@600	940	2	895	—	160	43	213	100	95	—	—	—
25A-WCH-2A-0002	2500@600	1020	2	895	—	172	43	213	100	95	—	—	—
25A-WCH-2A-0003	2500@600	1040	2	895	—	174	43	213	100	95	—	—	—
25A-WCH-2A-0004	2500@600	1067	2	975	—	177	43	213	100	95	—	—	—

- ▶ System is capable of accuracy within 0,1% of actual load weight. However, due to the display graduation limitations, the display may yield results outside the 0,1% range. **Consult Cascade** for details.
- ▶ Load length can not exceed the length of the fork by more than 155 mm.
- ▶ Forks are not included with attachment.
- ▶ Integral versions available, **consult Cascade**.
- ▶ ActivWeigh units ship with battery powered driver display and mounting bracket.
- ▶ Truck powered display (12V-80V) is available, see options page 14-20 for pricing and more information.
- ▶ Charger and two rechargeable scale batteries included.
- ▶ Optimal temperature range is 9.5°C - 40.5° C.
- ▶ Ingress protection IP65. Do not pressure wash.



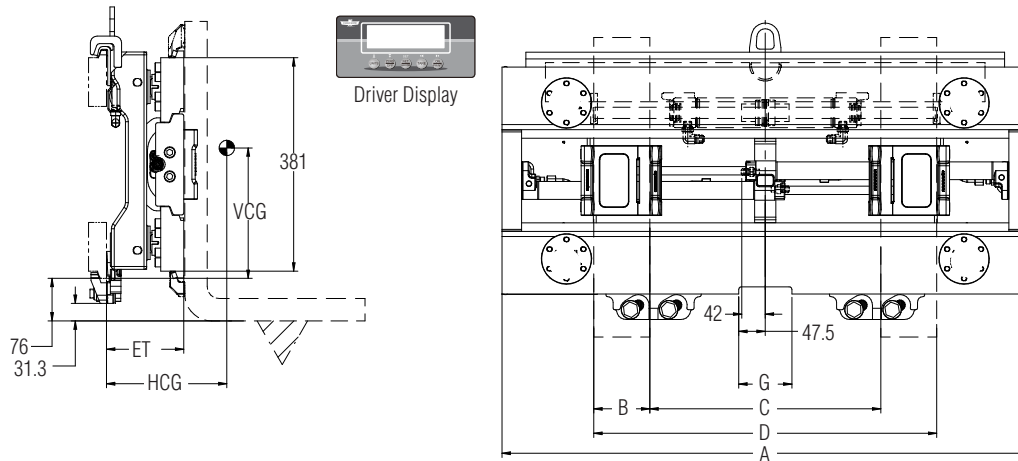


Hang-On

Catalogue Order No.	Capacity@ Load Centre	Frame Width	Mounting Class	Minimum Truck Carriage Width	Total Sideshift Available	Weight	Horizontal Centre of Gravity	Vertical Centre of Gravity	Effective Thickness	Fork Loading Slot	Fork Pocket Width	Opening Range In To Out	
		A	ISO 2328				HCG	VCG	ET	G	B	C	D
	kg@mm		mm	mm		kg	mm	mm	mm	mm			
Non-OIML Approved: 0-1,000 kg with 1 kg display graduation; 1,001-2,500 kg with 2 kg display graduation													
25A-WHS-2A-0001	2500@600	940	2	895	200	167	69	209	138	95	—	—	—
25A-WHS-2A-0002	2500@600	1020	2	895	200	178	70	209	138	95	—	—	—
25A-WHS-2A-0003	2500@600	1040	2	895	200	181	70	209	138	95	—	—	—
25A-WHS-2A-0004	2500@600	1067	2	975	200	184	70	209	138	95	—	—	—

- ▶ System is capable of accuracy within 0,1% of actual load weight. However, due to the display graduation limitations, the display may yield results outside the 0,1% range. **Consult Cascade** for details.
- ▶ Load length can not exceed the length of the fork by more than 155 mm.
- ▶ Forks are not included with attachment.
- ▶ Integral versions available, **consult Cascade**.
- ▶ ActivWeigh units ship with battery powered driver display and mounting bracket.
- ▶ Truck powered display (12V-80V) is available, see options page 14-20 for pricing and more information.
- ▶ Charger and two rechargeable scale batteries included.
- ▶ Optimal temperature range is 9.5°C - 40.5° C.
- ▶ Ingress protection IP65. Do not pressure wash.





Hang-On

Catalogue Order No.	Capacity@ Load Centre	Frame Width	Mounting Class	Minimum Truck Carriage Width	Total Sideshift Available	Weight	Horizontal Centre of Gravity	Vertical Centre of Gravity	Effective Thickness	Fork Loading Slot	Fork Pocket Width	Opening Range In To Out	
		A	ISO 2328				HCG	VCG	ET	G	B	C	D
	kg@mm		mm	mm		kg	mm	mm	mm	mm			
Non-OIML Approved: 0-1,000 kg with 1 kg display graduation; 1,001-2,500 kg with 2 kg display graduation													
25A-WHF-2A-0001	2500@600	940	2	895	200	178	73	208	138	95	100	50	815
25A-WHF-2A-0002	2500@600	1020	2	895	200	190	73	208	138	95	100	50	895
25A-WHF-2A-0003	2500@600	1040	2	895	200	192	73	208	138	95	100	50	915
25A-WHF-2A-0004	2500@600	1067	2	975	200	196	73	208	138	95	100	50	942

- ▶ System is capable of accuracy within 0,1% of actual load weight. However, due to the display graduation limitations, the display may yield results outside the 0,1% range. **Consult Cascade** for details.
- ▶ Load length can not exceed the length of the fork by more than 155 mm.
- ▶ Forks are not included with attachment.
- ▶ Integral versions available, **consult Cascade**.
- ▶ ActivWeigh units ship with battery powered driver display and mounting bracket.
- ▶ Truck powered display (12V-80V) is available, see options page 14-20 for pricing and more information.
- ▶ Charger and two rechargeable scale batteries included.
- ▶ Optimal temperature range is 9.5°C - 40.5° C.
- ▶ Ingress protection IP65. Do not pressure wash.

