

XL16 FORK EXTENSIONS



Handle Heavy, Long Loads up to 4 m in Length.



12mm welded steel plate



Customise the Length

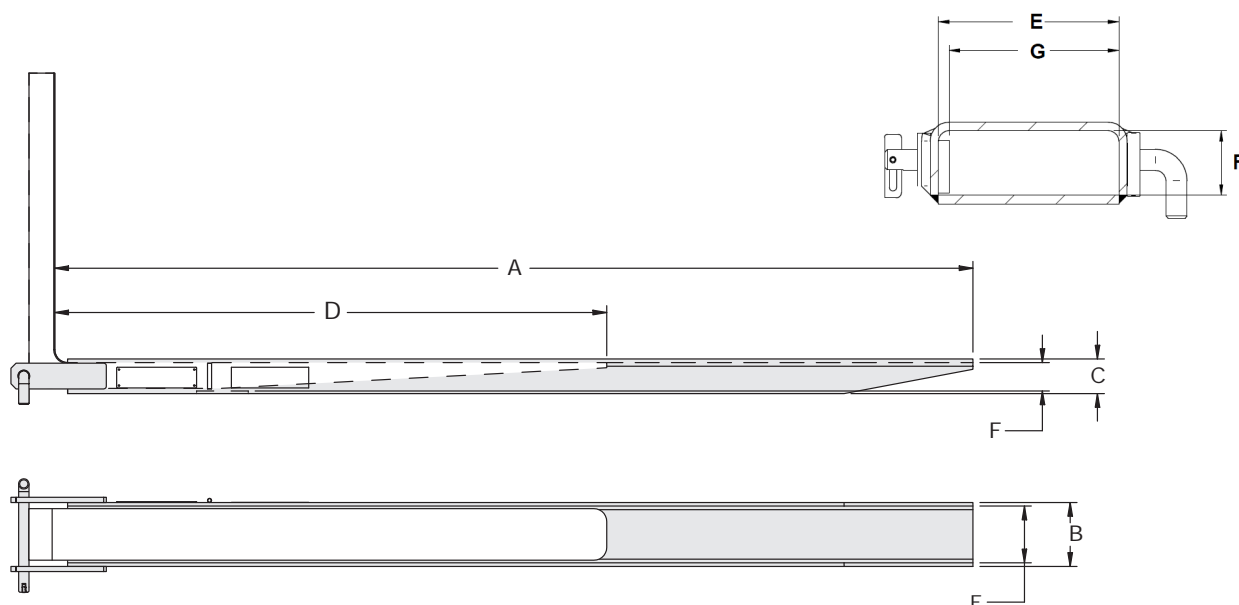


Use with 180 to 250mm wide forks

XL16 Fork Extensions – Fast, Economical and Heavy-Duty

Need a quick turnaround? XL16 Fork Extensions are on the shelf and ready to go. We cut to length and adjust the internal opening to suit your specific fork size. Get the right fit fast.

- Extend Your Fork Length Up to 4 m Instantly – Handle longer loads with greater stability.
- Built for Heavy Lifting – Suitable for loads up to 16 tonnes @ 600mm.
- Custom Fit Available – Cut to your required length and adjusted for a precise fork fit.
- Access Hard-to-Reach Freight – Improve handling of centrally located loads on transport vehicles.
- Designed to Australian Standards – AS 2359.15-2005 (2016) Part 15 6.1.
- 3-year warranty.



Catalogue Order No.	Capacity @ 600mm LC ① (kg)	Max Length (mm) A	Overall Width (mm) B	Overall Depth (mm) C	Min Fork Length (mm) D	Internal Width (mm) G	Max. Internal Width (mm) E	Internal Depth (mm) F	Fork Width (mm)	Weight per Pair (kg)	Horizontal Center of Gravity (mm)	Vertical Center of Gravity (mm)
160A-FEC-F-XXXX ②	16000	4000	290	140	2438	195	265	115	180	322	②	73
160A-FEC-F-XXXX ②	16000	4000	290	140	2438	215	265	115	200	320	②	73
160A-FEC-F-XXXX ②	16000	4000	290	140	2438	245	265	115	230	320	②	73
160A-FEC-F-0400	16000	4000	290	140	2438	265	265	115	250	318	1896	73

② Custom size

Note: All lift truck attachments affect the safe working load of a lift truck. End users should consult with their lift truck supplier to ensure that the lift truck is rated for use with these attachments.

① Capacity is calculated using max fork dimensions and may be less than the truck / fork type / fork extension combination. Australian Standards stipulate alternate truck nameplate ratings where fork extensions are used. Consult the lift truck manufacturer.