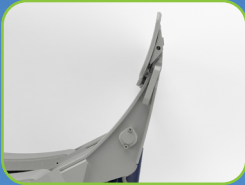
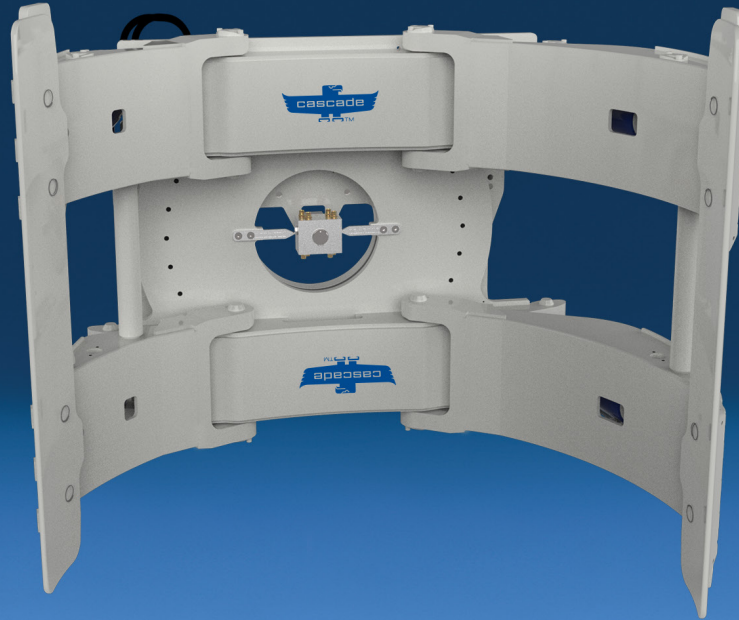


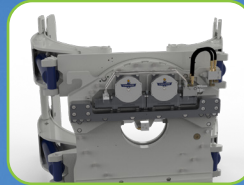
Versatile Paper Roll Clamps for Demanding Applications



Profiled arms and pads for easily knifing between rolls.



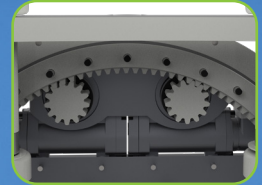
High-flow revolving connection provides faster arm movement and lower energy drain.



Excellent visibility facilitates precise second tier roll handling.



Streamlined pad with field serviceable wear tiles extends pad life.



High-torque, heavy-duty rotator for fast and continuous rotation.

APPLICATIONS

The 68H and 75H Paper Roll Clamps are designed for operations that handle large, heavy rolls, such as kraft, linerboard, and heavily coated stocks. Suitable for mills, converters, stevedores and shippers of large rolls of packaging paper of all types. Available load capacities range from 10,500 to 16,500 lbs.

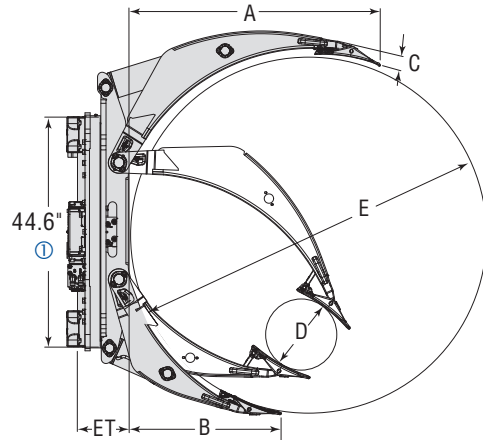
OPTIONS

- Wide range of contact pads for every type of paper
- Split or solid arm
- Fixed short arm for applications with roll sizes on the high side of the clamp's capacity range
- 180° Stop Group
- AFC - Adaptive Force Control
- HFC - Hydraulic Force Control
- ERC - Electronic Rotational Control
- Drop Stop System
- HFC with Drop Stop

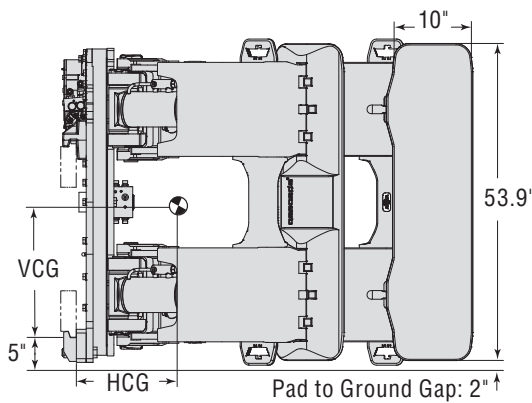
FEATURES

- Highly durable arm structure and pad profile that eliminates damage from knifing between rolls in containers, trailers, and railcars
- Pad protectors reduce wear to the contact pads
- Pad alignment system using dual spring technology holds the contact pads in proper alignment
- A variety of arm styles for flexibility in any application
- Short arm positioning to optimize small roll handling
- Excellent visibility through arms
- High-flow revolving connection provides fast arm speed and less energy consumption
- Quick 360° rotation speed with 15-tooth pinion
- High-torque, heavy-duty dual rotator drivetrain for fast, continuous rotation
- Can be configured with 2, 3 or 4 pads
- High-strength castings provide structural life needed for robust applications

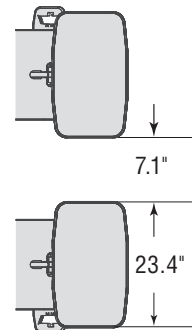
Fixed Frame



Solid Arm



Split Arm



Catalog Order No.	Capacity@ Load Center		Roll Range D-E	Mtg. Class	Mtg. Angle	Weight		Effective Thickness ET	Horizontal Ctr. of Gravity HCG	Vertical Ctr. of Gravity VCG	Long Arm Length A	Short Arm Length B	Long Arm Thickness C
	lbs@in	kg@mm				lbs	kg						
Fixed Frame/Positioned Short Arm/Solid Long Arm													
68H-RCP-4A-0025	15,000@30"	6,800@762	23.6-60"	IV	0°	3,906	1,772	10.8"	12.8"	18.3"	41.3"	26.1"	2.0"
68H-RCP-4A-0030	14,300@31.5"	6,480@800	24.2-63"	IV	0°	3,950	1,792	10.8"	13.1"	18.3"	42.6"	27.6"	2.0"
68H-RCP-4A-0035	12,500@36"	5,670@915	24-72"	IV	0°	4,154	1,884	10.8"	14.3"	18.3"	47.9"	31.2"	2.0"
68H-RCP-4A-0040	10,650@42.3"	4,825@1075	29.5-84.6"	IV	0°	4,325	1,962	10.8"	15.7"	18.3"	54.6"	37.0"	1.8"
68H-RCP-4A-0075	15,000@30"	6,800@762	23.6-60"	IV	2°	3,868	1,755	10.0"	12.2"	18.4"	41.3"	26.1"	2.0"
68H-RCP-4A-0080	14,300@31.5"	6,480@800	24.2-63"	IV	2°	3,913	1,775	10.0"	12.4"	18.4"	42.6"	27.6"	2.0"
68H-RCP-4A-0085	12,500@36"	5,670@915	24-72"	IV	2°	4,117	1,867	10.0"	13.7"	18.4"	47.9"	31.2"	2.0"
68H-RCP-4A-0090	10,650@42.3"	4,825@1075	29.5-84.6"	IV	2°	4,288	1,945	10.0"	15.1"	18.4"	54.6"	37.0"	1.8"
Fixed Frame/Positioned Short Arm/Split Long Arm													
68H-RDP-4A-0025	15,000@30"	6,800@762	23.6-60"	IV	0°	3,850	1,746	10.8"	12.4"	18.3"	41.3"	26.1"	2.0"
68H-RDP-4A-0030	14,300@31.5"	6,480@800	24.2-63"	IV	0°	3,895	1,767	10.8"	12.7"	18.3"	42.6"	27.6"	2.0"
68H-RDP-4A-0035	12,500@36"	5,670@915	24-72"	IV	0°	4,098	1,859	10.8"	13.9"	18.3"	47.9"	31.2"	2.0"
68H-RDP-4A-0040	10,650@42.3"	4,825@1075	29.5-84.6"	IV	0°	4,270	1,937	10.8"	15.3"	18.3"	54.6"	37.0"	1.8"
68H-RDP-4A-0075	15,000@30"	6,800@762	23.6-60"	IV	2°	3,813	1,730	10.0"	11.8"	18.4"	41.3"	26.1"	2.0"
68H-RDP-4A-0080	14,300@31.5"	6,480@800	24.2-63"	IV	2°	3,858	1,750	10.0"	12.0"	18.4"	42.6"	27.6"	2.0"
68H-RDP-4A-0085	12,500@36"	5,670@915	24-72"	IV	2°	4,061	1,842	10.0"	13.2"	18.4"	47.9"	31.2"	2.0"
68H-RDP-4A-0090	10,650@42.3"	4,825@1075	29.5-84.6"	IV	2°	4,233	1,920	10.0"	14.6"	18.4"	54.6"	37.0"	1.8"

① Dimension is the widest spread of either upper or lower hook.

- ▶ All models can be configured with a fixed short arm. Consult Cascade for model number and specifications.
- ▶ 0° mounting is suitable for general applications with primarily vertical roll handling. 0° mounting must be used when stacking above 220".

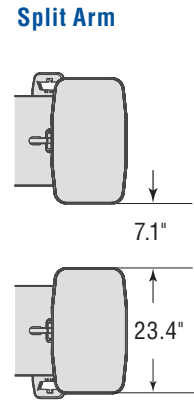
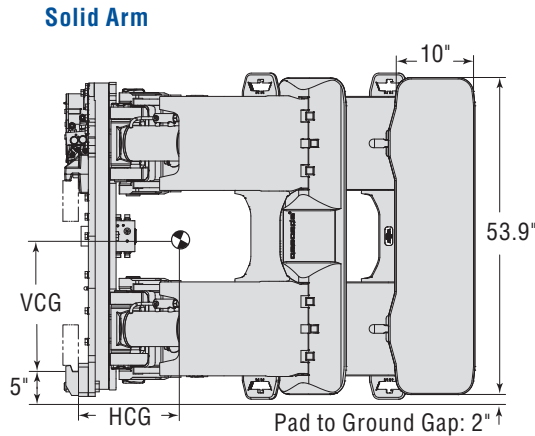
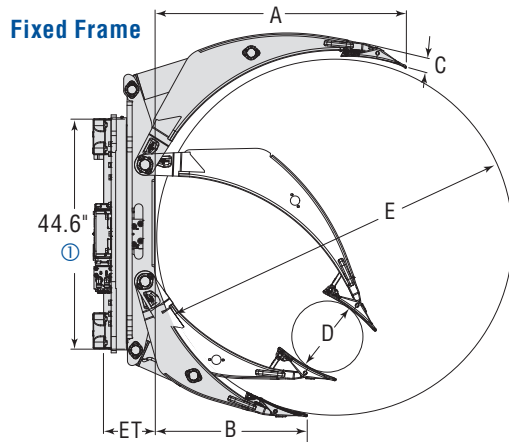
- ▶ 2° mounting is recommended for frequent bilge handling and/or with rubber or urethane pad coatings, which increase the pad thickness.
- ▶ Model shown is with Herringbone contact pads. Other pad options are available, consult Cascade.
- ▶ Auxiliary pressure protection is required for the rotator section unless the option is specified at the time of the order. Contact your Cascade representative for details.

ROTATOR SPECIFICATIONS

Model	RPM	Recommended Flow GPM	Torque in-lbs@2300 psi
68H	3.8	20	144,350

HYDRAULIC FLOW & PRESSURE

Model	Maximum Clamp & Rotate Operating Pressure (psi)	Maximum Deliverable Truck Pressure (psi)	Clamp Circuit Pressure Protected Yes/No?	Rotator Circuit Pressure Protected Yes/No?	Number of Functions	Flow Clamp Min-Rec-Max Function 1 / gpm	Flow Rotation Min-Rec-Max Function 2 / gpm
68H	2300	2300	No	Yes	2	15 - 20 - 25	15 - 20 - 25



Catalog Order No.	Capacity@ Load Center		Roll Range D-E	Mtg. Class	Mtg. Angle	Weight		Effective Thickness ET	Horizontal Ctr. of Gravity HCG	Vertical Ctr. of Gravity VCG	Long Arm Length A	Short Arm Length B	Long Arm Thickness C
	lbs@in	kg@mm				lbs	kg						
Fixed Frame/Positioned Short Arm/Solid Long Arm													
75H-RCP-4A-0025	16,535@30"	7,500@762	15.7-60	IV	0°	3,978	1,804	10.8"	12.6"	18.4"	41.3"	26.1"	2.0"
75H-RCP-4A-0030	15,730@31.5"	7,135@800	13.8-63	IV	0°	4,023	1,825	10.8"	12.9"	18.4"	42.6"	27.6"	2.0"
75H-RCP-4A-0035	13,755@36"	6,239@915	12.2-72	IV	0°	4,226	1,917	10.8"	14.1"	18.4"	47.9"	31.2"	2.0"
75H-RCP-4A-0040	11,707@42.3"	5,310@1075	15.7-84.6	IV	0°	4,397	1,995	10.8"	15.5"	18.4"	54.6"	37.0"	1.8"
75H-RCP-4A-0075	16,535@30"	7,500@762	15.7-60	IV	2°	3,937	1,786	10.0"	11.9"	18.6"	41.3"	26.1"	2.0"
75H-RCP-4A-0080	15,730@31.5"	7,135@800	13.8-63	IV	2°	3,982	1,806	10.0"	12.1"	18.6"	42.6"	27.6"	2.0"
75H-RCP-4A-0085	13,755@36"	6,239@915	12.2-72	IV	2°	4,186	1,899	10.0"	13.4"	18.6"	47.9"	31.2"	2.0"
75H-RCP-4A-0090	11,707@42.3"	5,310@1075	15.7-84.6	IV	2°	4,357	1,976	10.0"	14.7"	18.6"	54.6"	37.0"	1.8"
Fixed Frame/Positioned Short Arm/Split Long Arm													
75H-RDP-4A-0025	16,535@30"	7,500@762	15.7-60	IV	0°	3,922	1,779	10.8"	12.2"	18.4"	41.3"	26.1"	2.0"
75H-RDP-4A-0030	15,730@31.5"	7,135@800	13.8-63	IV	0°	3,967	1,799	10.8"	12.5"	18.4"	42.6"	27.6"	2.0"
75H-RDP-4A-0035	13,755@36"	6,239@915	12.2-72	IV	0°	4,170	1,892	10.8"	13.7"	18.4"	47.9"	31.2"	2.0"
75H-RDP-4A-0040	11,707@42.3"	5,310@1075	15.7-84.6	IV	0°	4,341	1,969	10.8"	15.0"	18.4"	54.6"	37.0"	1.8"
75H-RDP-4A-0075	16,535@30"	7,500@762	15.7-60	IV	2°	3,881	1,761	10.0"	11.5"	18.6"	41.3"	26.1"	2.0"
75H-RDP-4A-0080	15,730@31.5"	7,135@800	13.8-63	IV	2°	3,926	1,781	10.0"	11.7"	18.6"	42.6"	27.6"	2.0"
75H-RDP-4A-0085	13,755@36"	6,239@915	12.2-72	IV	2°	4,130	1,873	10.0"	12.9"	18.6"	47.9"	31.2"	2.0"
75H-RDP-4A-0090	11,707@42.3"	5,310@1075	15.7-84.6	IV	2°	4,301	1,951	10.0"	14.3"	18.6"	54.6"	37.0"	1.8"

① Dimension is the widest spread of either upper or lower hook.

- ▶ All models can be configured with a fixed short arm. Consult Cascade for model number and specifications.
- ▶ 0° mounting is suitable for general applications with primarily vertical roll handling. 0° mounting must be used when stacking above 220".
- ▶ 2° mounting is recommended for frequent bilge handling and/or with rubber or urethane pad coatings, which increase the pad thickness.

- ▶ Model shown is with Herringbone contact pads. Other pad options are available, consult Cascade.
- ▶ Auxiliary pressure protection is required for the rotator section unless the option is specified at the time of the order. Contact your Cascade representative for details.

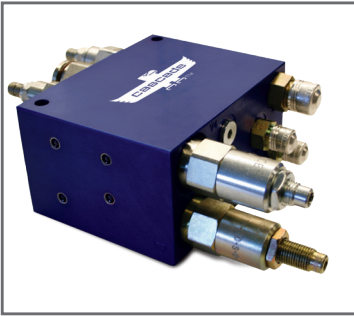
ROTATOR SPECIFICATIONS

Model	RPM	Recommended Flow GPM	Torque in-lbs@2300 psi
75H	3.8	20	144,350

HYDRAULIC FLOW & PRESSURE

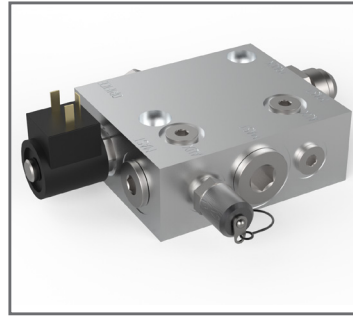
Model	Maximum Clamp & Rotate Operating Pressure (psi)	Maximum Deliverable Truck Pressure (psi)	Clamp Circuit Pressure Protected Yes/No?	Rotator Circuit Pressure Protected Yes/No?	Number of Functions	Flow Clamp Min-Rec-Max Function 1 / gpm	Flow Rotation Min-Rec-Max Function 2 / gpm
75H	2300	2300	No	Yes	2	15 - 20 - 25	15 - 20 - 25

OPTIONS and ACCESSORIES:



HFC™ - Hydraulic Force Control

Automatic clamp force system that changes the clamp force proportional to load weight by continuously sensing how much hydraulic pressure is necessary to lift the load.



Drop Stop

Prevents clamp pads from sliding down the roll and tearing paper after unclamping the roll in the slack chain condition. Can be combined with HFC™ for even greater damage prevention.



AFC™ - Adaptive Force Control

Computer-controlled system that prevents the driver from overclamping a load by controlling the clamp force. (AFC Digital Display shown)

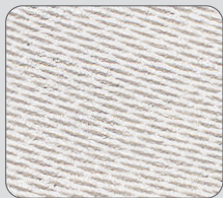


ERC - Electronic Rotational Control

Provides 180° stops during rotation, automatically aligning pad to roll and the roll to ground.

A PAD FOR EVERY PAPER

Herringbone



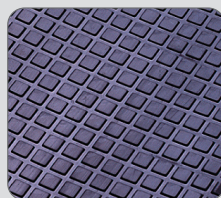
For most common paper types.

Ribbed Herringbone



For papers that need more friction — kraft, preprint, gypsum board, liner board-coated, and glassine/greaseproof.

RXH Rubber



For newsprint, coated/magazine, super-calendered SC, milk carton/waxed, glassine/greaseproof, and white printing papers.

Bolt-On UDP



For newsprint, coated stock or any paper requiring increased friction to apply adequate clamp force. (UDP provides a compressible high friction surface.)

Bolt-On Rubber



For any paper requiring increased friction to reduce necessary clamp force. RXH or smooth rubber available.

Herringbone (Tissue)



Excellent friction without grabbing tissue. Multiple pad shapes optimized for different tissue densities.