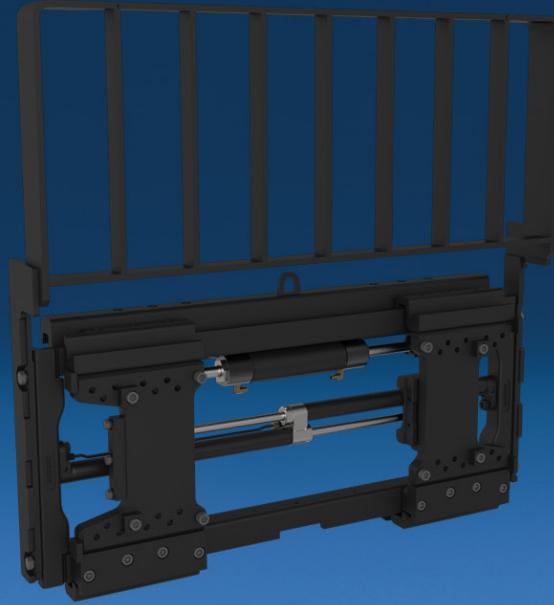
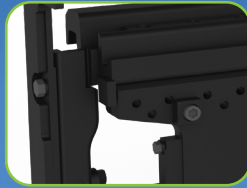


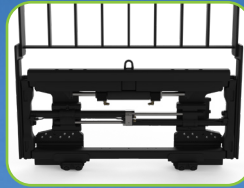
Rugged Fork Positioning for Demanding Applications and Harsh Environments



Secure bolt-on full-width load backrest



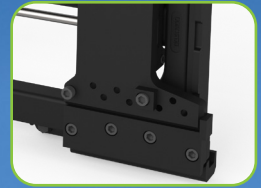
Long lasting replaceable bearing segments ensuring smooth travel and no wear on the fork hooks



See over the top of the frame with excellent operator visibility



Fork carriers accommodate various fork widths and fork mounting positions



Unique design and construction allows fork carriers to extend beyond the frame width

APPLICATIONS

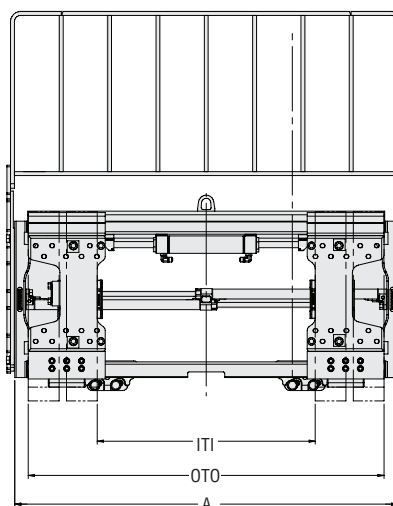
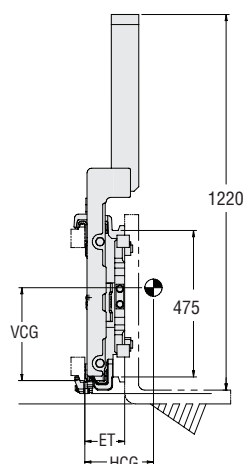
Recommended for rigorous applications including automotive, steel, lumber and various outdoor uses. Suitable for both standard, long fork and specialty forks such as telescopic fork applications, the K-Series "Carrier" Class 3 Fork Positioners have a capacity range from ~ 3,000-4,600 kgs. K-Series "Carrier" Class 3 Fork Positioners are designed to be used in the most rugged environments, tackling your toughest material handling challenges. The fork carriers are easily adjusted to accommodate a variety of fork widths.

FEATURES

- Multiple hose termination options for quick and easy installation.
- Fork carriers with easy-to-service, durable, replaceable bearing segments ensure smooth travel and no wear on the fork hooks.
- Easy-to-install full-width load backrest.
- Unique design and construction allow fork carriers to extend beyond the frame width.
- Adaptable fork carriers accommodate various fork widths and can be adjusted so the forks are full out or forks full in.
- No-Weld installation.
- Zinc plated, corrosion resistant components.

OPTIONS

- Non-sideshifting or custom sideshift stroke.
- Anti-drift hydraulics and independent fork control.
- Radio Frequency (RF), Solenoid or Sequence Valve hydraulic controls.
- Quick-disconnect lower hooks.
- Custom load backrest heights and custom fork ranges.
- Several termination options including non-standard RH/LH arrangements for quick and easy installation.
- Bronze upper sideshift bearings.
- Bronze lower sideshift hooks
- Cylinder and/or pallet guards.
- Bolt-on, Weld-on or Telescopic Forks.



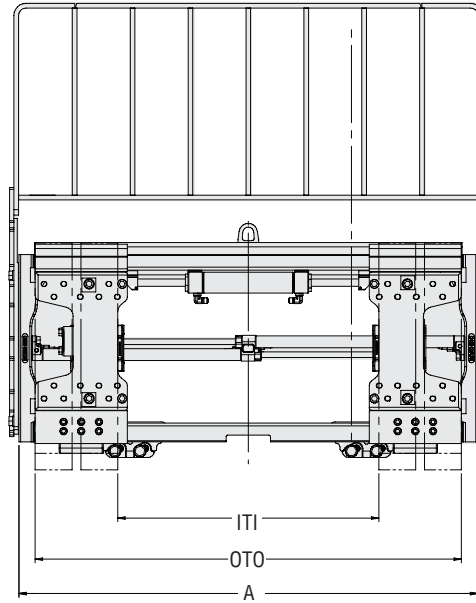
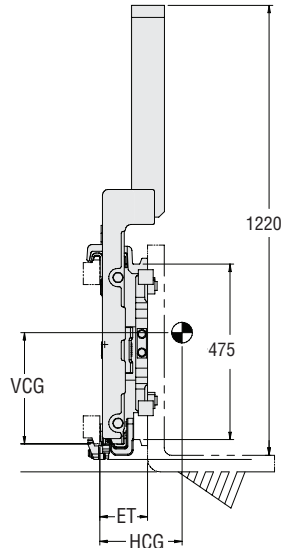
Sideshifting

Catalog Order No.	kg	Capacity @ Load Center mm	Frame Width (mm) A	Forks Full Out on Carrier (Out to Out) ① OTO-OTO	Forks Full In on Carrier (In to In) ② ITI-ITI	Mtg. Class	Min. Truck Carriage Width (mm)	Weight kg	Effective Thickness (mm) ET	Horizontal Ctr. of Gravity (mm) HCG	Vertical Ctr. of Gravity (mm) VCG	Total Sideshift (mm)
With Backrest 48"												
65K-FPS-3A-6100	3,000	600	940	507-1040	59-595	3A	870	188	141	114	361	200
65K-FPS-3A-6101	3,000	600	970	507-1070	59-625	3A	870	192	141	113	377	200
65K-FPS-3A-6102	3,000	600	1000	507-1100	59-655	3A	870	195	141	103	364	200
65K-FPS-3A-6103	3,000	600	1040	507-1140	59-695	3A	935	197	141	103	381	200
65K-FPS-3A-6104	3,000	600	1070	507-1170	59-725	3A	935	198	141	102	384	200
65K-FPS-3A-6105	3,000	600	1170	507-1270	59-825	3A	1035	206	141	102	384	200
65K-FPS-3A-6106	3,000	600	1220	507-1320	59-875	3A	1035	215	141	102	384	200
65K-FPS-3A-6107	3,000	600	1245	507-1345	59-900	3A	1035	220	141	102	384	200
65K-FPS-3A-6108	3,000	600	1300	507-1400	59-955	3A	1035	222	141	102	384	200

① To calculate minimum in to in dimensions with forks full out on carriers: for 100, 122, 125, 127, 130, 150, 180, 200mm wide forks subtract 200, 244, 250, 254, 260, 300, 360, 400mm respectively from "OTO" dimension.

② To calculate maximum out to out dimensions with forks full in on carriers: for 100, 122, 125, 127, 130, 150, 180mm wide forks add 200, 244, 250, 254, 260, 300, 360mm respectively to "ITI" dimension.

- ▶ Suitable for 100, 122, 125, 127, 130, 150, 180, 200mm forks.
- ▶ 200mm forks can only be placed in the forks full out position on the carrier.
- ▶ Consult Cascade for applications beyond recommended load limits.
- ▶ In order to insure that the unit best suited for the application is selected, consult Cascade.
- ▶ Forks are not included with attachment.
- ▶ Fork installation does not require welding, drilling or tapping.
- ▶ Consult Cascade for unit without load backrest.
- ▶ **DO NOT USE TO CLAMP LOADS.**



Sideshifting

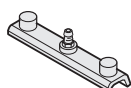
Catalog Order No.	kg	Capacity @ Load Center mm	Frame Width (mm) A	Forks Full Out on Carrier (Out to Out) ① OTO-OTO	Forks Full In on Carrier (In to In) ② ITI-ITI	Mtg. Class	Min. Truck Carriage Width (mm)	Weight kg	Effective Thickness ET (mm)	Horizontal Ctr. of Gravity (mm) HCG	Vertical Ctr. of Gravity (mm) VCG	Total Sideshift (mm)
With Backrest 1220 mm												
100K-FPS-3A-6100	4,600	600	1040	580-1140	62-620	3A	935	280	141	114	361	8"
100K-FPS-3A-6101	4,600	600	1245	580-1345	62-825	3A	1065	309	141	113	377	8"
100K-FPS-3A-6102	4,600	600	1550	580-1650	62-1130	3A	1240	388	141	103	364	8"
100K-FPS-3A-6103	4,600	600	1730	580-1830	62-1310	3A	1470	426	141	103	381	8"
100K-FPS-3A-6104	4,600	600	1905	580-2005	62-1485	3A	1670	453	141	102	384	8"

① To calculate minimum in to in dimensions with forks full out on carriers: for 122, 125, 127, 130, 150, 180, 200, 250mm wide forks subtract 244, 250, 254, 260, 300, 360, 400, 500mm respectively from "OTO" dimension.

② To calculate maximum out to out dimensions with forks full in on carriers: for 122, 125, 127, 130, 150, 180, 200, 250mm wide forks add 244, 250, 254, 260, 300, 360, 400, 500mm respectively to "ITI" dimension.

- ▶ Suitable for 122, 125, 127, 130, 150, 180, 200mm, 250mm forks.
- ▶ Consult Cascade for applications beyond recommended load limits.
- ▶ In order to insure that the unit best suited for the application is selected, consult Cascade.
- ▶ Forks are not included with attachment.
- ▶ Fork installation does not require welding, drilling or tapping.
- ▶ Non-sideshifting units available.
- ▶ Consult Cascade for unit without load backrest.
- ▶ **DO NOT USE TO CLAMP LOADS.**

OPTIONS AND ACCESSORIES



Bronze Bearings and Hooks

Recommended for highly abrasive and contaminated environments. Using both bronze upper and lower bearings may increase sideshift hydraulic pressure requirements.



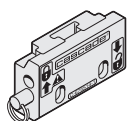
Extended Load Center Package

For applications where the load center exceeds 48" or the fork length exceeds 96". Includes Bronze Upper Bearings and Bronze Lower Hooks.



Cold Storage Package

For applications where temperatures may fluctuate from normal ambient to -40° F or where the unit will operate continuously in temperatures from 32° to -20°F. Includes Bronze Upper Bearings, Bronze Lower Bearings and Bronze Lower Hooks (if available).



Quick-Disconnect Mounting Kit (Factory Install Only)

Quick-Disconnect Mounting Kits increase versatility by allowing the attachments and trucks to be interchangeable. After disconnecting hydraulic hose couplers, attachments can be interchanged in two minutes or less without the use of tools (Quick-Disconnect Hydraulic Couplers not included in kit).

Sequence Valve - Attachment Mounted Factory Installed

Permits fork positioning at the end of the sideshift stroke. Allows fork positioning and sideshifting with a single function auxiliary hydraulic system (sideshift left to open forks, sideshift right to close forks).

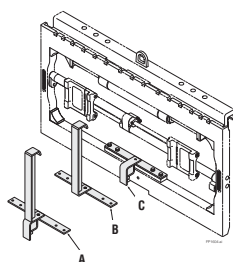
Option	Order Code
Bronze Lower Hooks (pair)	KIILBH
Bronze Upper Bearings (pair)	KIIUBB
Bronze Lower Bearings (pair)	KIILBB
Extended Load Center Package	KIIELP
Cold Storage Package	KIICSP
Quick Disconnect Mounting Kit	KLQDIII
Sequence Valve	SV12

Solenoid Valve - Attachment Mounted Factory Installed

Allows one auxiliary valve to be used for a sideshifting unit. Includes control knob.

Truck Voltage Order Code

12V	SD11
24V	SD12
36V	SD13
48V	SD14



Bolt-On Protector Kits

Optional guard to prevent pallet or cylinder damage, includes fasteners.

Option	Order Code
Cylinder/Pallet Guard (A)	KLCPG
Cylinder Guard Only (B)	KLCG
Pallet Guard Only (C)	KLPG

Radio Frequency Hydraulic Control

A cost-effective means to position forks on a K or L-Series Fork Positioner. Permits the use of a single auxiliary valve to control an additional hydraulic function. Includes two Li-Ion batteries, Li-Ion Universal Smart Charger and Low Profile Switch Kit. If a Control Knob is required in place of the Low Profile Switch Kit, list as a separate item on the order. Includes either a Low Profile Switch Kit or a Control Knob Kit.

Option	Order Code
Radio Frequency Hydraulic Control FPS	RFHC
Li-Ion Universal Smart Battery Charger	BACH
Control Knob Kit	6823292
JIC Installation Kit	6055928
ORFS Installation Kit	6055932

K-Series Carrier Load Backrests

Catalog Order No.	Model	Width (mm)	Backrest Height (mm)
6961299	55K Carrier	787	1220
6961302	55K Carrier	919	1220
6961303	55K Carrier	940	1220
6961304	55K Carrier	978	1220
6961305	55K Carrier	1021	1220
6961306	55K Carrier	1039	1220
6961307	55K Carrier	1067	1220
6960937	55K Carrier	1219	1220
6961311	55K Carrier	1245	1220
6961329	55K Carrier	1300	1220
6964730	65K Carrier	940	1220
6964693	65K Carrier	970	1220
6964731	65K Carrier	1001	1220
6964964	65K Carrier	1039	1220
6964732	65K Carrier	1069	1220
6964736	65K Carrier	1171	1220
6964737	65K Carrier	1219	1220
6964966	65K Carrier	1245	1220
6964738	65K Carrier	1300	1220
6951769	100K Carrier	1039	1220
6953927	100K Carrier	1245	1220
6954143	100K Carrier	1549	1220
6954156	100K Carrier	1730	1220
6954159	100K Carrier	1905	1220
6970379	120/150K Carrier	1125	1220
6970415	120/150K Carrier	1176	1220
6970473	120/150K Carrier	1199	1220
6970474	120/150K Carrier	1219	1220
6970475	120/150K Carrier	1245	1220
6970476	120/150K Carrier	1374	1220
6970477	120/150K Carrier	1501	1220
6970478	120/150K Carrier	1524	1220
6970479	120/150K Carrier	1549	1220
6977519	120/150K Carrier	1674	1220
6977521	120/150K Carrier	1826	1220
6977524	120/150K Carrier	1900	1220
6977530	120/150K Carrier	1989	1220
6977550	120/150K Carrier	2200	1220
6977556	120/150K Carrier	2375	1220