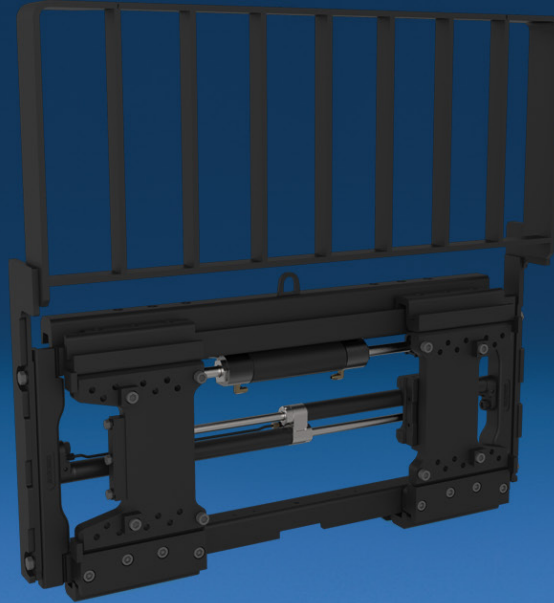


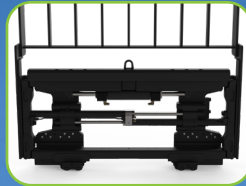
Rugged Fork Positioning for Demanding Applications and Harsh Environments



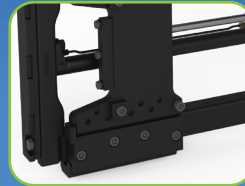
Secure bolt-on full-width load backrest



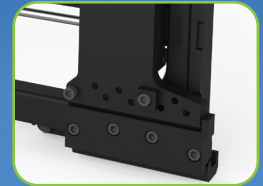
Long lasting replaceable bearing segments ensuring smooth travel and no wear on the fork hooks



See over the top of the frame with excellent operator visibility



Fork carriers accommodate various fork widths and fork mounting positions



Unique design and construction allows fork carriers to extend beyond the frame width

APPLICATIONS

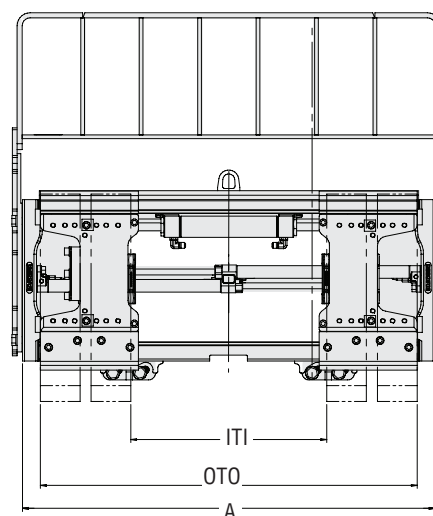
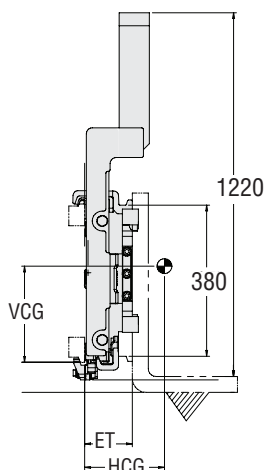
Recommended for rigorous applications including automotive, steel, lumber and various outdoor uses. Suitable for both standard, long fork and specialty forks such as telescopic fork applications, the K-Series "Carrier" Fork Positioners Class 2 are available in a capacity of 2,500 kgs. K-Series "Carrier" Fork Positioners are designed to be used in the most rugged environments, tackling your toughest material handling challenges. The fork carriers are easily adjusted to accommodate a variety of fork widths.

FEATURES

- Multiple hose termination options for quick and easy installation.
- Fork carriers with easy-to-service, durable, replaceable bearing segments ensure smooth travel and no wear on the fork hooks.
- Easy-to-install full-width load backrest.
- Unique design and construction allow fork carriers to extend beyond the frame width.
- Adaptable fork carriers accommodate various fork widths and can be adjusted so the forks are full out or forks full in.
- No-Weld installation.
- Zinc plated, corrosion resistant components.

OPTIONS

- Non-sideshifting or custom sideshift stroke.
- Anti-drift hydraulics and independent fork control.
- Radio Frequency (RF), Solenoid or Sequence Valve hydraulic controls.
- Quick-disconnect lower hooks.
- Custom load backrest heights and custom fork ranges.
- Several termination options including non-standard RH/LH arrangements for quick and easy installation.
- Bronze upper sideshift bearings.
- Bronze lower sideshift hooks
- Cylinder and/or pallet guards.
- Bolt-on, Weld-on or Telescopic Forks.



Sideshifting

Catalog Order No.	Capacity@ (600 mm) Load Center kg	Frame Width (mm) A	Forks Full Out on Carrier (Out to Out) ① OTO-OTO	Forks Full In on Carrier (In to In) ② ITI-ITI	Mtg. Class	Min. Truck Carriage Width (mm)	Weight kg	Effective Thickness (mm) ET	Horizontal Ctr. of Gravity (mm) HCG	Vertical Ctr. of Gravity (mm) VCG	Total Sideshift (mm)
With Backrest 1200 mm											
55K-FPS-2A-6100	2,500	787	495-887	39-431	2A	735	146	120	94	370	200
55K-FPS-2A-6101	2,500	920	495-1020	39-564	2A	785	153	120	94	369	200
55K-FPS-2A-6102	2,500	940	495-1040	39-584	2A	895	153	120	93	369	200
55K-FPS-2A-6103	2,500	977	495-1077	39-621	2A	895	158	120	94	377	200
55K-FPS-2A-6104	2,500	1020	495-1120	39-664	2A	880	160	120	94	376	200
55K-FPS-2A-6105	2,500	1040	495-1140	39-684	2A	895	161	120	94	376	200
55K-FPS-2A-6106	2,500	1067	495-1167	39-711	2A	975	173	120	94	376	200
55K-FPS-2A-6107	2,500	1220	495-1320	39-864	2A	1040	173	120	93	380	200
55K-FPS-2A-6108	2,500	1245	495-1345	39-889	2A	1040	174	120	93	380	200
55K-FPS-2A-6109	2,500	1300	495-1400	39-944	2A	1040	179	120	94	386	200

① To calculate minimum in to in dimensions with forks full out on carriers: for 100, 122, 125, 127, 130, 150, 180mm wide forks subtract 200, 244, 250, 254, 260, 300, 360mm respectively from "OTO" dimension.

② To calculate maximum out to out dimensions with forks full in on carriers: for 100, 122, 125, 127, 130, 150, 180mm wide forks add 200, 244, 250, 254, 260, 300, 360mm respectively to "ITI" dimension.

- ▶ Suitable for 100, 122, 125, 127, 130, 150, 180mm forks.
- ▶ Consult Cascade for applications beyond recommended load limits.
- ▶ In order to insure that the unit best suited for the application is selected, consult Cascade.
- ▶ Forks are not included with attachment.
- ▶ Fork installation does not require welding, drilling or tapping.
- ▶ Non-sideshifting units available.
- ▶ Consult Cascade for unit without load backrest.
- ▶ **DO NOT USE TO CLAMP LOADS.**