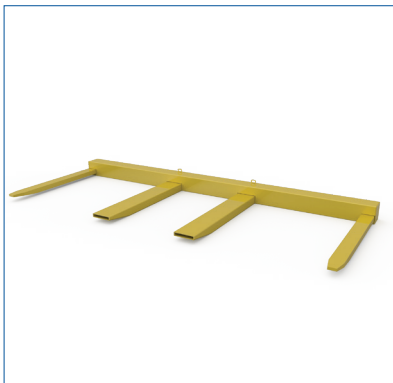




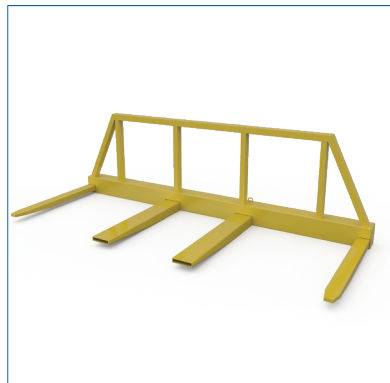
WIDE FORK FRAMES



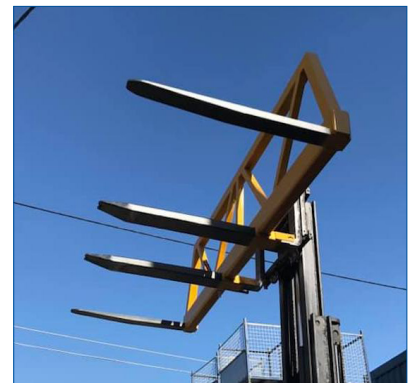
Securely Handle Wide Loads



25H-WFC-F-0100



30H-WFL-F-0100



Custom Designs Available

APPLICATIONS

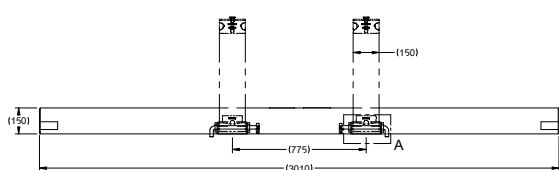
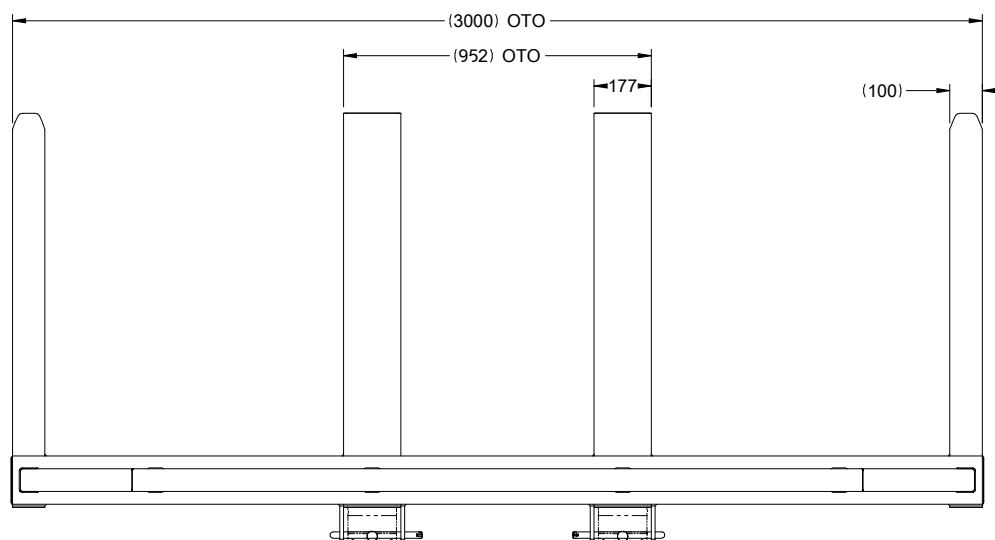
Allows the lift truck operator to efficiently carry wide loads with a high level of stability. Lengths of pipe, flexible board, and metal extrusion can all be moved without excessive flexing. Quickly and efficiently increase the usable fork spread and number of forks being used. Available with or without load backrest.

FEATURES & BENEFITS

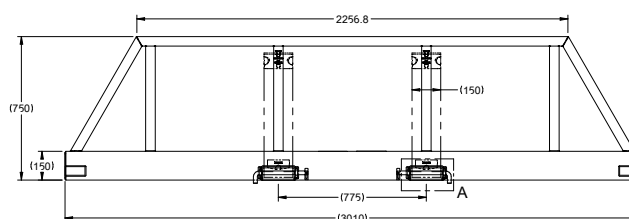
- Painted finish in high-visibility yellow.
- Easy use locking pins.
- Welded Load Backrest for extra strength, not bolted.
- Supplied with rating plate and user manual.
- 3-year warranty.

Note: Designed in accordance with AS2359, the central slippers should be no longer than 167% of the supporting lift truck's tyne length. If the slippers are longer than this, their use shall be restricted to their specified application. All lift truck attachments affect the safe working load of the truck. End users should consult their equipment supplier to ensure the lift truck is rated for use with these attachments.





25H-WFC-F-0100



30H-WFL-F-0100

Catalogue Order Number	Capacity (KG) @ 600mm	Overall Length (mm)	Overall Width (mm)	Fork Pockets (mm)	Fork Pocket Centres (mm)	Weight (kg)	Effective Thickness (mm)	Horizontal Centre of Gravity (mm)	Vertical Centre of Gravity (mm)
25H-WFC-F-0100	2500	1220	3000	165 x 60	775	212	160	420	-8
30H-WFL-F-0100	3000	1220	3000	165 x 60	775	241	160	276	18